

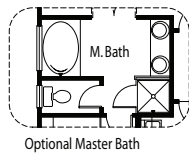
The Rosewood Model 910 Village Series

Base Plan Square Footage:*

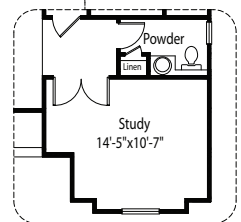
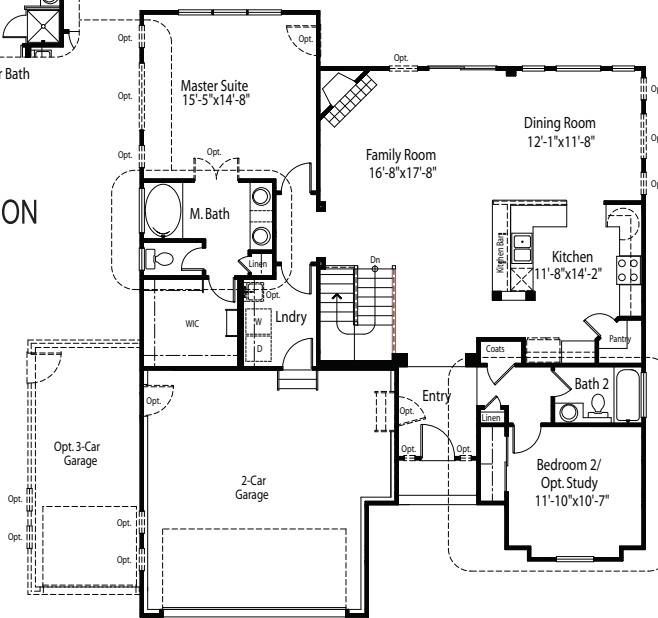
Main Level:	1,580 Sq. Ft.
Basement Level:	1,580 Sq. Ft.
Total:	3,160 Sq. Ft.

*Actual square footage may vary due to added options, chosen elevations, or amount of basement finish.

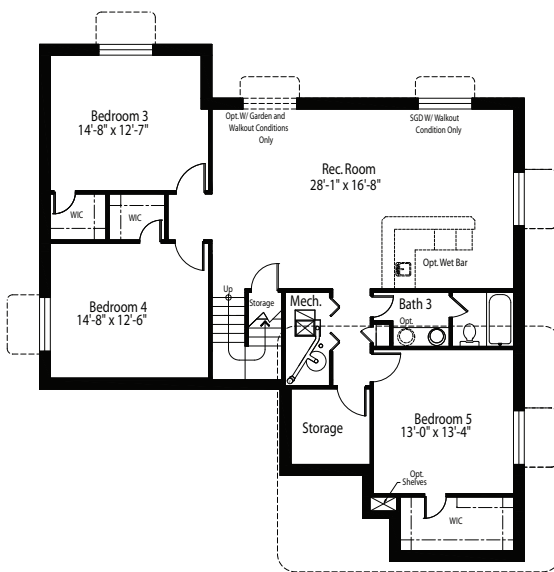
MAIN LEVEL OPTIONAL "D" ELEVATION



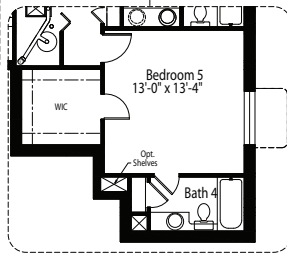
Optional Master Bath



Study Option



BASEMENT LEVEL With Optional Finish



Optional Bath 4



The Difference Really Hits Home.
www.classichomes.com



Artist's conception. All plans, features and specifications are subject to change without notification. Measurements are approximate and may vary.

04/25/2005